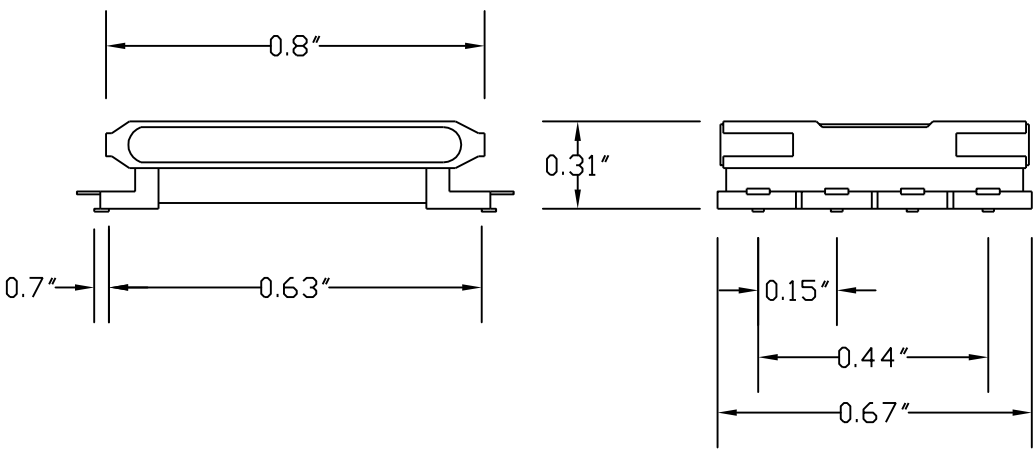
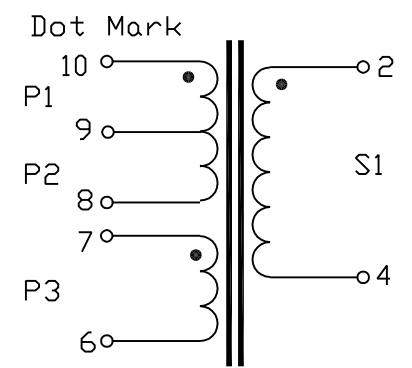
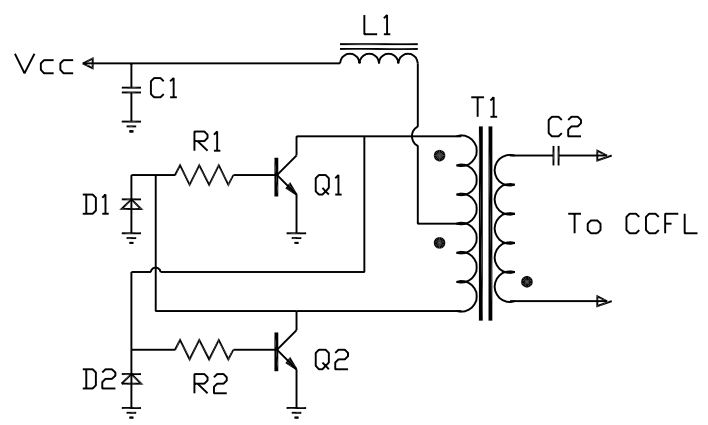


REVISIONS				
ZONE	REV	DESCRIPTION	DATE	APPROVED



NOTES:

1. Turn Ratio: Input:Output is 1:33.8
2. Primary Inductance: P1/P2/P3 = 36,36,3.7uH
3. Secondary Inductance: S1 = 160mH
4. Primary DCR: P1+P2/P3 = 0.3, 0.1 Ohm
5. Secondary DCR: S1 = 100 Ohms
6. Current Rating: Primary 230mA, Secondary 30mA
7. P3 Winding for optional feedback control



BILL OF MATERIALS:

- Q1,Q2 = NPN C2500
- R1,R2 = 8.2K Ohms
- D1,D2 = 1N4001 / 4148
- C1 = 10uF, 25V. C2 = 22pF, 2KV
- L1 = 80uH

UNLESS OTHERWISE SPECIFIED: DIMENSIONS ARE IN INCHES TOLERANCES		INTEGRITY TECHNOLOGY			
DECIMALS	ANGULAR				
.XX ± .05	± 0.5°	SCALE	FSCM NO.	DWG NO.	A
.XXX ± .010	DO NOT SCALE DRAWING	A		F16S	
DRAWN	J. YOUNG	DATE	1-05	SCALE	NONE
CHECKED		DESIGN		XTE-F16S	SHEET 1 OF 1