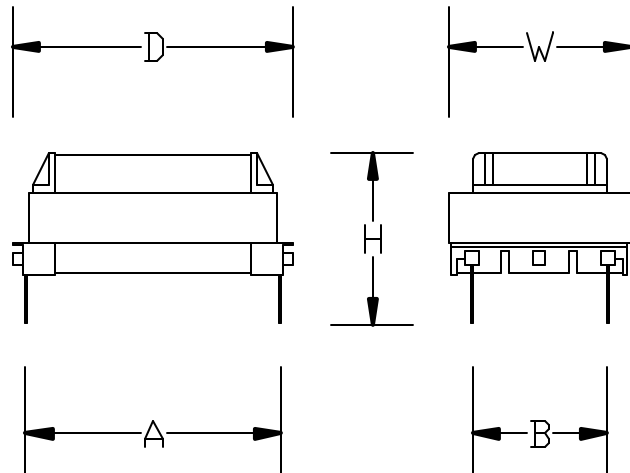


REVISIONS				
ZONE	REV	DESCRIPTION	DATE	APPROVED
International WET Modem Coupling 9600 bps				

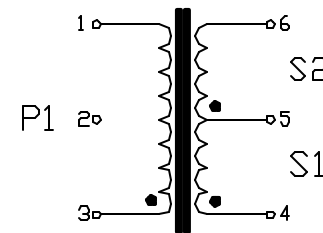


NOTES:

1. IMPEDENCE: 600 OHM : 600 OHM
2. INSERTION LOSS: 1.8 dB MAX. AT 1KHZ WITH 80mA DC
3. RETURN LOSS: 12.0 dB AT 300 Hz
4. RETURN LOSS: 25.0 dB AT 1K Hz
5. UNBALANCE DC BIAS AT PRIMARY: 90mA DC
6. TURN RATIO: 1 : 1.03 +/- 1%
7. DCR PRIMARY : SECONDARY = 75 : 105 OHMS
8. INDUCTANCE PRIMARY : SECONDARY = 380mH AT 1K Hz
9. CURRENT RATING PRIMARY : SECONDARY = 90mA
10. DIELECTRIC STRENGTH 3750 Vrms 1 MINUTE BETWEEN PRI, SEC & CORE
11. INSULATION RESISTANCE: 20 MOHM MIN AT 500 VDC, PRI/SEC/CORE
12. TEMPERATURE RISE TEST: LESS THAN 60C
13. TEST SIGNAL: 1 Vrms AC PEAK-TO-PEAK, 1 KHz, 80mA, PER FCC PART 68.

DIMENSION:

W = .75" (19mm), H = .51" (13mm), D = 1.18" (30mm)  
 A = 0.94" (24mm), B = 0.39" (10mm)  
 PIN DIA = 0.03" (.8mm) TYP, LENGTH = .2" (5mm), PCB HOLE SIZE = 0.05" (1.2mm),



UNLESS OTHERWISE SPECIFIED: DIMENSIONS ARE IN INCHES TOLERANCES		INTEGRITY TECHNOLOGY			
DECIMALS .XX ± 0.05		ANGULAR ± 0.5		TELECOM TRANSFORMER	
XXX ± .010 DO NOT SCALE DRAWING		DATE	SIZE	FSCM NO.	DWG NO.
DRAWN	J. YOUNG	7-99	A		T19Z
CHECKED					REV D
DESIGN			SCALE NONE	XTE-T19Z	SHEET 1 OF 1