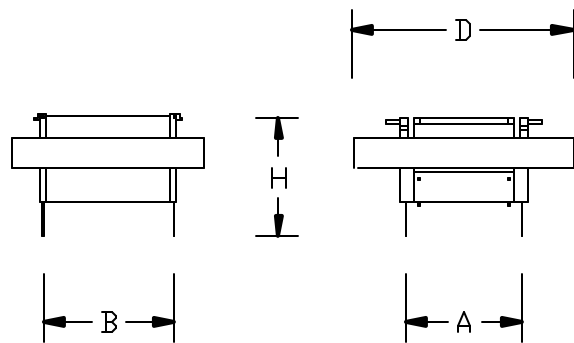
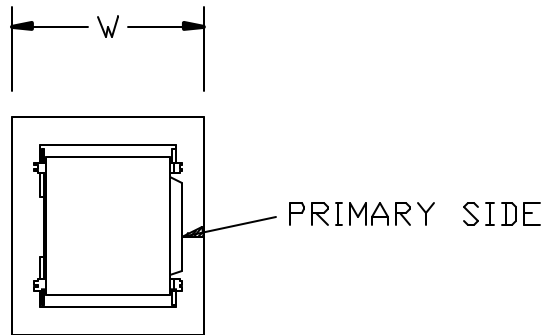
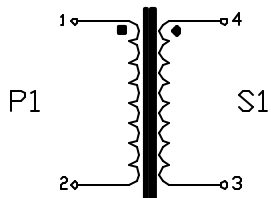


REVISIONS				
ZONE	REV	DESCRIPTION	DATE	APPROVED
ITU V.90 TRANSMIT AND RECEIVE AT 56Kbps				



NOTES:

1. IMPEDANCE: REFLECT 600 OHM ON PRI WITH 374 OHM LOAD ON SEC.
2. LONGITUDINAL BALANCE: 200-1000 Hz: 60dB MIN.
1000-4000 Hz: 40dB MIN.
3. DC RESISTANCE: PRI = 108 OHM +/- 10% SEC = 120 OHM +/- 10%.
4. FREQUENCY RESPONSE AT 200 TO 4000 HZ IS +/- 0.25dB.
5. INSERTION LOSS IS 2.0dB +/- 0.25dB AT 20C
6. DIELECTRIC STRENGTH: 1500 Vrms 1 MINUTE AT PRI TO SEC/CORE
7. PRIMARY DC BIAS LOOP CURRENT: 0mA (NONE - DRY CIRCUIT)
8. INDUCTANCE: PRI = SEC = 12H AT 200HZ
9. TURN RATIO: PRI = SEC = 1 : 1 +/- 2%
10. TOTAL HARMONIC DISTORTION:
-76dB (0.016%) MAX AT 600HZ -10dBm
12. INSULATION RESISTANCE: 500VDC, 1 MEGA OHMS.
13. OPERATING TEMPERATURE: 0C TO +80C
14. TEMPERATURE RISE: LESS THAN 70C
15. TEST SIGNAL: 1 Vrms AC PEAK-TO-PEAK, 1KHz, 80mA.



DIMENSION:

1. W = 0.897" (22.8mm), H = 0.492" (12.5mm), D = 0.969" (24.6mm)
2. A = 0.452" (11.5mm), B = 0.55" (14mm)
3. PIN LENGTH = 0.2" (5mm), PIN DIA = 0.3" (0.8mm)
4. PCB HOLE DIA SIZE = 0.05" (1.2mm)

UNLESS OTHERWISE SPECIFIED: DIMENSIONS ARE IN INCHES TOLERANCES		INTEGRITY TECHNOLOGY			
DECIMALS .XX ± 0.05 .XXX ± 0.010 DO NOT SCALE DRAWING		ANGULAR ± 0.5		MODEM TRANSFORMER	
DRAWN	J. YOUNG	DATE	4-99		REV
CHECKED		SIZE	FSCM NO.	DWG NO.	D
DESIGN		A		T24Z	
		SCALE	NONE	XTE-T24Z	SHEET 1 OF 1